

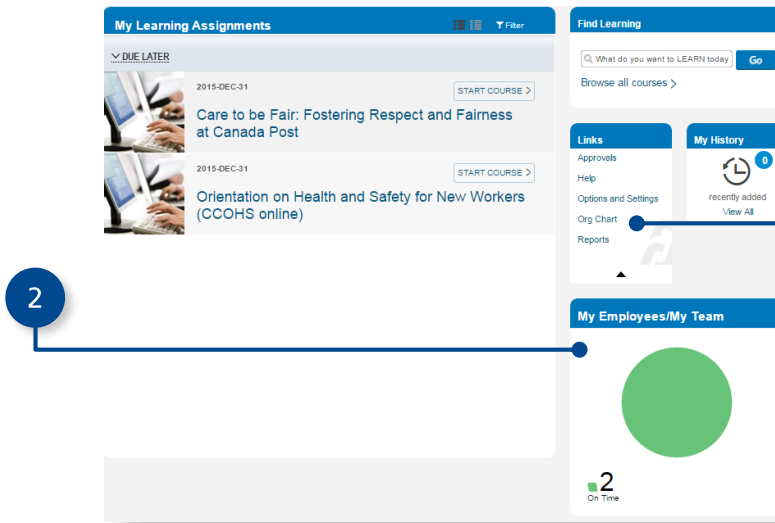
How to view my team's learning status and learning assignments

Click on **My Learning**



The **My Employee/My Team** menu, lets you see if your team is up to date on their training activities.

The pie chart will change depending on completion of learning activities with due dates

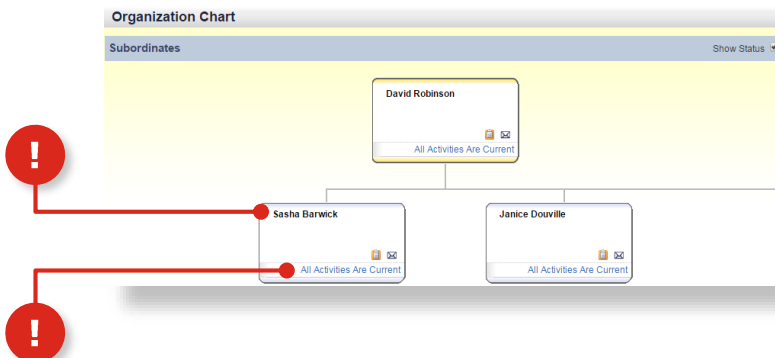


You can also see if your team is up to date on their training activities in an Org Chart View

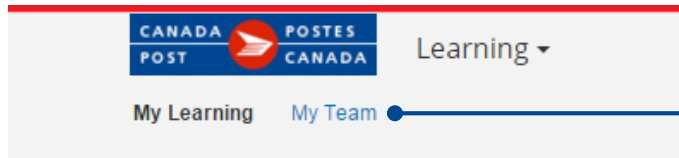
From the **Links** menu, click on **Org Chart** A new window will open

Employee name

Status

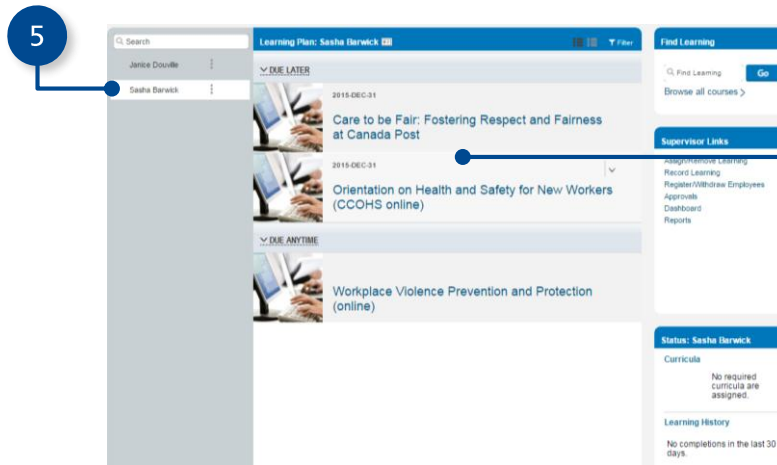


How to view my team's learning status and learning assignments



4 Click on **My Team**

Click on the team member's name to view their **Learning Assignment**



View courses that have already been assigned to the selected team member including due dates